



World Field Target Federation

# Core Rules

January 2016



# World Field Target Federation

## Core Rules

### Contents

|      |                                               |    |
|------|-----------------------------------------------|----|
| 1.   | EQUIPMENT .....                               | 3  |
| 1.1  | AIRGUNS .....                                 | 3  |
| 1.2  | AMMUNITION.....                               | 3  |
| 1.3  | SIGHTS .....                                  | 3  |
| 1.4  | RIFLE ACCESSORIES ALLOWED .....               | 3  |
| 1.5  | WIND READING OPTIONS .....                    | 4  |
| 1.6  | CLOTHING.....                                 | 4  |
| 1.7  | SEATING.....                                  | 4  |
| 1.8  | KNEELING .....                                | 4  |
| 2.   | SHOOTING RANGE.....                           | 5  |
| 2.1  | TERRAIN .....                                 | 5  |
| 2.2  | COURSE CONTENT.....                           | 5  |
| 2.3  | SHOOTING .....                                | 6  |
| 2.4  | TARGETS .....                                 | 6  |
| 2.5  | TARGET COLOURS .....                          | 7  |
| 2.6  | TARGET PLACEMENT AND NUMBERING .....          | 7  |
| 2.7  | REDUCED DIAMETER HIT ZONES .....              | 8  |
| 2.8  | POSITIONAL TARGETS .....                      | 8  |
| 2.9  | PRACTISE/SIGHTING IN RANGE.....               | 9  |
| 2.10 | SHOOTING LINE .....                           | 9  |
| 2.11 | TARGET SIGNAGE .....                          | 10 |
| 2.12 | STANDARD SIGNAGE FOR POSITIONAL TARGETS ..... | 10 |
| 2.13 | SCORE CARD .....                              | 11 |
| 3.   | SAFETY.....                                   | 11 |
| 4.   | ADMINISTRATION .....                          | 12 |
| 4.1  | ENTRIES .....                                 | 12 |
| 4.2  | CATEGORIES .....                              | 13 |
| 4.3  | CLASSES.....                                  | 13 |
| 4.4  | NATIONAL TEAMS .....                          | 13 |
| 4.5  | GROUPING TOP SHOOTERS.....                    | 14 |
| 4.6  | SHOOTING GROUPS .....                         | 14 |
| 4.7  | MARSHALLING.....                              | 15 |
| 4.8  | DISABLED SHOOTERS.....                        | 15 |
| 4.9  | EMERGENCY SERVICES .....                      | 15 |
| 4.10 | RULES ACCESS.....                             | 15 |
| 5.   | COMPETITION .....                             | 15 |
| 5.1  | THE COURSE .....                              | 15 |
| 5.2  | PRACTISE DAY.....                             | 15 |
| 5.3  | RIFLE POWER VALIDATION (Chronograph) .....    | 16 |
| 5.4  | START / COURSE Re-Open procedure .....        | 16 |
| 5.5  | CEASEFIRE PROCEDURE .....                     | 17 |
| 5.6  | TIME ALLOWED.....                             | 17 |
| 5.7  | ADDRESSING TARGETS.....                       | 17 |
| 5.8  | SCORING & SCORE CARDS .....                   | 18 |
| 5.9  | SCORE CARD CORRECTION .....                   | 18 |
| 5.10 | DISPUTED TARGETS.....                         | 19 |
| 5.11 | LEAVING THE LINE OF FIRE .....                | 19 |
| 5.12 | FINAL RESULTS .....                           | 20 |
| 5.13 | TIED SCORES .....                             | 20 |
| 5.14 | LATE ARRIVALS - Shooters .....                | 20 |
| 5.15 | UNSAFE PRACTICE /CHEATING .....               | 21 |
| 5.16 | PROCEDURES TO PROTEST .....                   | 21 |
| 5.17 | SMOKING .....                                 | 21 |
| 6.   | WFTF RECOGNITIONS .....                       | 21 |
| 6.1  | PRIZES FOR WINNERS.....                       | 21 |
| 6.2  | FIELD TARGET MASTER TITLE.....                | 21 |
| 6.3  | SERVICE TO THE SPORT AWARD .....              | 22 |
| 7.   | DISCIPLINARY MATTERS.....                     | 22 |
| 7.1  | TYPES OF MEASURES .....                       | 22 |
| 7.2  | MULTI-NATIONAL JURY .....                     | 22 |
| 7.3  | WARNINGS TREATMENT.....                       | 23 |
| 7.4  | DEFINED PENALTIES .....                       | 24 |
| 8.   | DEFINITIONS .....                             | 25 |
| 9.   | ANNEXURE – A (Pellet Speed Table) .....       | 29 |
| 10.  | DOCUMENT CONTROL .....                        | 30 |



# World Field Target Federation

## Core Rules

These rules will apply to all World Championship, International or other major Field Target events. RGBs are urged to apply these rules to all field target competitions that are hosted under their auspices.

### 1. EQUIPMENT

#### 1.1 AIRGUNS

**1.1.1** Air rifles (PCP or Springer) with a muzzle energy not exceeding 12 ft. lbs (16.3 Joules), and which are in safe working condition may be used.

**1.1.2** No power adjustments may be made to an air rifle during a competition.

**1.1.3** Fully adjustable rifle stocks, excluding thigh rests, are permitted to accommodate various shooting styles and positions.

#### 1.2 AMMUNITION

Any design of pellet that is completely made of lead, lead alloy, zinc or zinc alloy, or a similar material may be used.

#### 1.3 SIGHTS

Any form of sighting system may be used with the exception of laser sights. No built-in or separate range finding device may be used.

#### 1.4 RIFLE ACCESSORIES ALLOWED

- a. (One) Rifle sling - no additional straps are allowed



- b. Butt hook



- c. Spirit level  
d. Sunshade on scope  
e. Scope enhancer  
f. Thermometer  
g. Wind indicator (non-electronic)  
h. Inclinator  
i. Bipod (Only to support the rifle while not in use)



# World Field Target Federation

## Core Rules

- j. Rail, Barrel and butt-stock WEIGHTS
- k. Close Focus



### 1.5 WIND READING OPTIONS

**1.5.1** To assist shooters reading the wind the available options are:

- a) Wind Indicator (string or similar) attached to the rifle.
- b) Target string (reset cord).

**1.5.2** No additional equipment, electronic or other, may be used to assist the shooter in evaluating the wind or other weather conditions during competition.

### 1.6 CLOTHING

**1.6.1** Any type of clothing, glove or footwear is allowed provided it is not a hazard to the shooter or others.

**1.6.2** Clothing may be padded to reduce the pressure of the rifle stock resting on the arm or knee.

**1.6.3** Separate pads may be worn over non-padded clothing.

**1.6.4** Gloves may not contain any rigid material extending beyond the wrist.

### 1.7 SEATING

**1.7.1** The maximum height for any form of seating is 150 mm (6") when flattened between 2 boards.

**1.7.2** The bean bag seat may only be used as an aid in sitting shots only.



### 1.8 KNEELING

**1.8.1** A kneeling roll must be provided by the organization (cone design under test).

**1.8.2** A shooter may use their personal Kneeling roll during the Kneeling position.

- a. Shape: cone design
- b. Diameter: 180mm (max)
- c. length: any

**1.8.3** Shooting without any kind of knee support is also allowed.

**1.8.4** The bean bag (seat) cannot be used in the kneeling position.





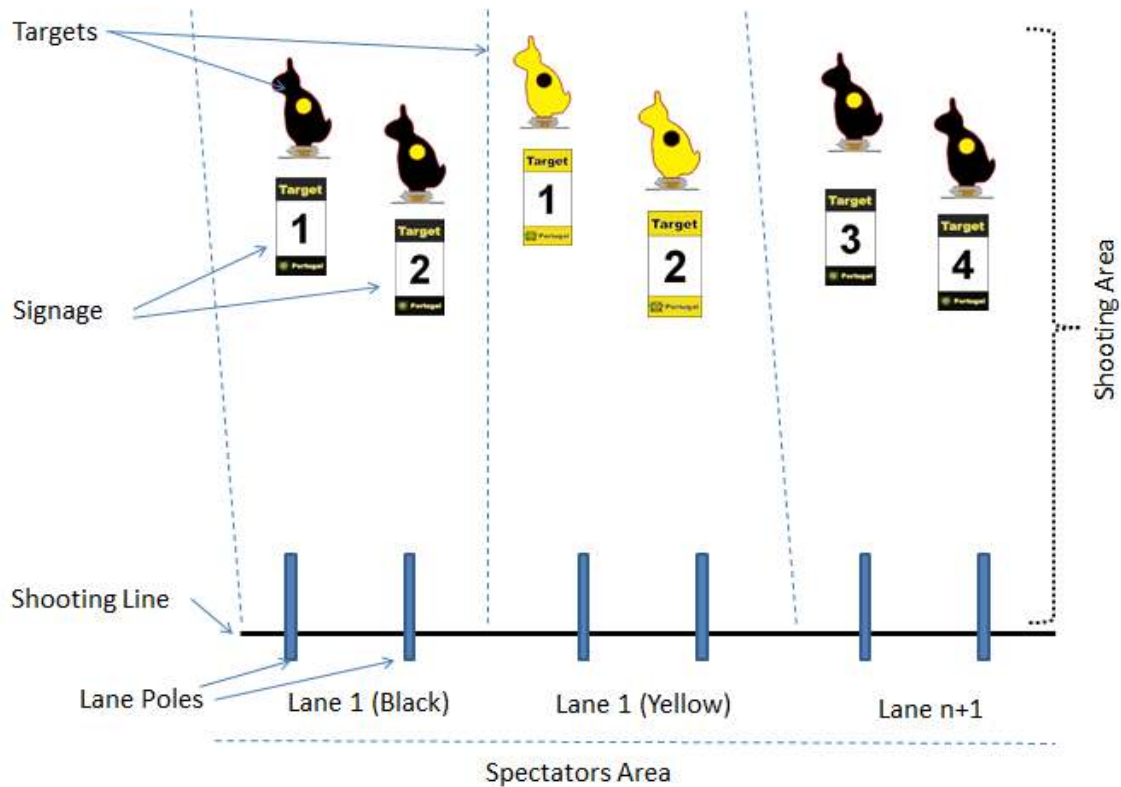
# World Field Target Federation

## Core Rules

### 2. SHOOTING RANGE

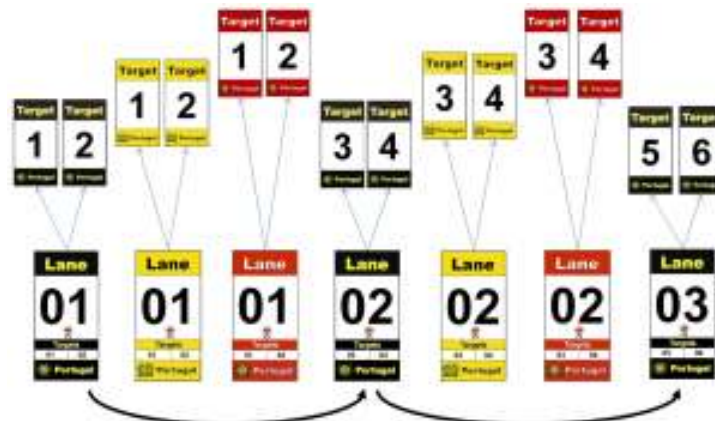
#### 2.1 TERRAIN

2.1.1 For field target shooting events a suitable field/forest terrain should be identified and prepared.



2.1.2 For the annual World Field Target Championship event this terrain should have three courses of 25 lanes each with 2 targets per lane (total of 50 targets per course).

2.1.3 Lanes of these three courses must alternate (e.g. red/white/black course) along the terrain.



#### 2.2 COURSE CONTENT

2.2.1 The course shall consist of 150 targets over 3 days. In cases of force majeure other options maybe agreed between team captains.

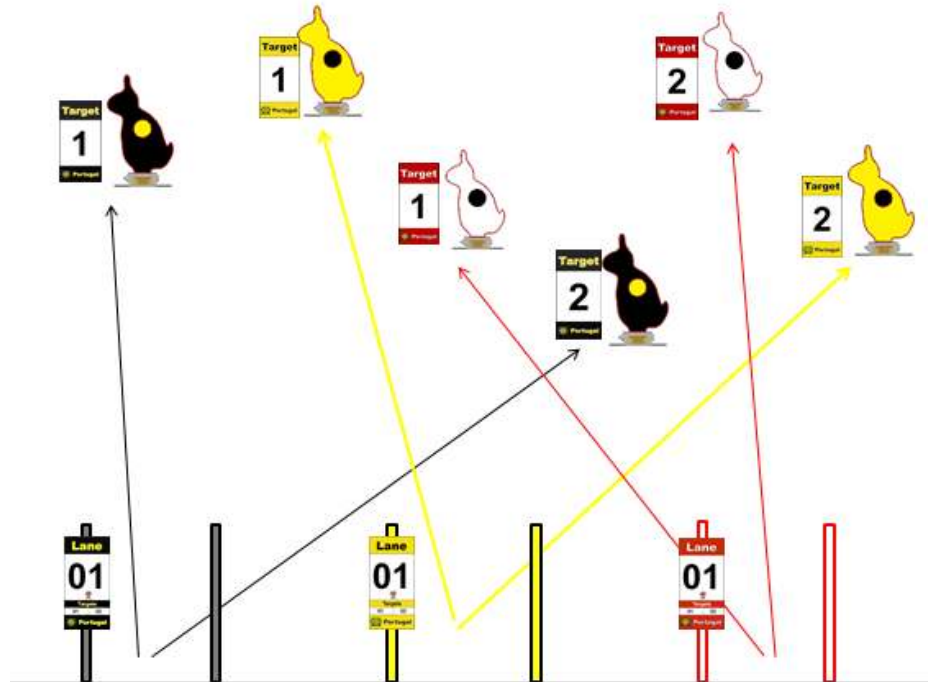
2.2.2 Lanes in a World Field target Championship must contain 2 targets.



# World Field Target Federation

## Core Rules

2.2.3 Cross Targets are considered to be part of the Field Target Sport.



2.2.4 Targets face plate & paddle must be 100% visible from all shooting positions; standing, kneeling, sitting.

2.2.5 Any obstruction should be removed by a Marshal prior to the first shooter shooting that lane otherwise the obstruction must remain for the duration of the competition.

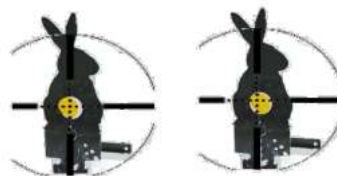
2.2.6 No lane firing area should result in a dangerous stance having to be adopted by the shooter i.e. excessively steep, slippery, etc.

### 2.3 SHOOTING

2.3.1 Targets are addressed in numerical sequence i.e. 23,24,25,26, etc...

2.3.2 Shooters shall be timed 2 targets=3mins

3:00 min



2.3.3 Every shooter is charged with leaving each lane firing area in a safe and tidy condition for the following shooters.

### 2.4 TARGETS

2.4.1 Metal silhouette “fall when hit” targets with a face plate with hole and paddle behind that are resettable from the firing point shall be used.

2.4.2 The hit zones shall be circular and of a contrasting colour to the faceplate.



# World Field Target Federation

## Core Rules

- 2.4.3 The use of simulated hit zones on any other part of the faceplate is prohibited.
- 2.4.4 Standard hit zones shall be 40 mm in diameter.
- 2.4.5 A limited number of targets may be fitted with reduced diameter hit zones of 15 mm or 25 mm. These reducers shall be painted the same colour as the faceplate.
- 2.4.6 Reducer must be fit on the outside of faceplate, facing the shooter (not inside).
- 2.4.7 Targets shall be painted every day before starting a new round/competition.

### 2.5 TARGET COLOURS

In the World Field Target Championship the allowed target colours are:

- a. Yellow faceplates with black hit-zones, or
- b. Black faceplates with yellow hit-zones, or
- c. White faceplates with black hit-zones, or
- d. Black faceplates with white hit-zones



### 2.6 TARGET PLACEMENT AND NUMBERING

2.6.1 Targets shall be placed at distances of between 9 metres and 50 metres from the firing line and according with the following table.

| Targets (Max. distance) | 15 mm       | 25 mm     | 40 mm     |
|-------------------------|-------------|-----------|-----------|
| Non-positional targets  | 20 metres   | 35 metres | 50 metres |
| Positional targets      | Not allowed | 20 metres | 40 metres |

2.6.2 All targets shall be clearly numbered (per course from left to right) at the target and the firing line.

2.6.3 Targets may be placed at higher or lower elevation to the firing line, but must at all times be fully visible from all shooting positions and the target faceplate must face the shooter at a 90° angle (plus or minus 5° - Horizontal level).

2.6.4 The target distance can be obtained from the nearest lane pole in a straight line from the pole lane to the target.





# World Field Target Federation

## Core Rules

**2.6.5** Before starting the championship a country representative (RGB, team captain or a designated shooter) may validate the circuit and request to double check a target distance.

**2.6.6** As soon the championship starts any target outside the valid distances (including positional targets) will be considered as valid provided the target distance does not exceed 50 metres distance and not less than 9 metres.

**2.6.7** During competition if a shooter considers a target is above 50 metres or less than 9 metres, the shooter may decide between shooting the target and presenting a protest to a Marshall.

- a. If the decision is to shoot the target the result will be register and the shooter loses the possibility of presenting a protest.
- b. If the decision is to protest that information will be register in the score card and at the end of the competition the target in question will be measured by a Marshall to check the distance. If the target is inside the official measures (between 9-50 metres) a miss "0" will be register in the shooter's score card. If the target is outside the legal measures the target will be removed from competition and an "X" registers to everyone.

### 2.7 REDUCED DIAMETER HIT ZONES

**2.7.1** The total number of targets with reduced diameter hit zones may not exceed 25% (12 targets) of the total targets on a 50 target course.

### 2.8 POSITIONAL TARGETS

**2.8.1** The basic/free shooting position is sitting but some lanes may be designated as 'standing' or 'kneeling'.

**2.8.2** The total number of targets designated as standing or kneeling may not exceed 20% of the total number of targets on that particular course, e.g. 10 targets (5 lanes) on a 50 target course.

**2.8.3** These positional targets should be divided as equally as possible, e.g. 3 standing and 2 kneeling lanes or vice versa.

**2.8.4** The maximum distance that positional targets may be placed at is 40 metres.

| Targets (Max. distance) | 15 mm       | 25 mm     | 40 mm     |
|-------------------------|-------------|-----------|-----------|
| Positional targets      | Not allowed | 20 metres | 40 metres |

**2.8.5** A clear sign at the firing line shall indicate kneeling or standing lanes (recommend between lane poles).







# World Field Target Federation

## Core Rules

### 2.9 PRACTISE/SIGHTING IN RANGE

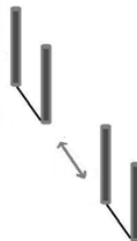
- 2.9.1 A safe practise area shall be provided for the shooters at least one day before the World Field Target Championship event.
- 2.9.2 The practise area should be in close proximity to the competition range.
- 2.9.3 Multiple paper targets should be placed at the different competition distances between 9 and 50 metres.
- 2.9.4 As a minimum, paper targets must be placed at 9 metres and every 5 metres from 10 to 50 metres and the target distance written on each paper target distance.
- 2.9.5 As a minimum, paper targets must be replaced at least once a day.
- 2.9.6 The range should be large enough to accommodate all shooters.
- 2.9.7 Compressed air should be available for shooters and a Deputy Marshal shall be present whenever this range is open for practise.
- 2.9.8 All the range safety rules will apply.
- 2.9.9 On each competition day a short practise period may be applied (e.g. one-two hours).
- 2.9.10 Each shooter should have the opportunity to practice for a minimum of 15 minutes on each competition day.

### 2.10 SHOOTING LINE

- 2.10.1 The shooting line/position is indicated by a clear line on the ground or two posts between which shooters must shoot from.
- 2.10.2 The gates must be posts and cannot be trees or other objects.
- 2.10.3 The minimum distance between lane poles is 1 metre.



- 2.10.1 The minimum distance between two (2) Shooting lanes is three (3) metres.



- 2.10.2 When shooting, the barrel of a rifle must be in front of this line, but the trigger must remain behind it.





# World Field Target Federation

## Core Rules

### 2.11 TARGET SIGNAGE

**2.11.1** The signs' colour must be easily associated with the targets by having similar colour between the target faceplate and the sign.



Note: A document template with the signage is available in WFTF website for download.

### 2.12 STANDARD SIGNAGE FOR POSITIONAL TARGETS

**2.12.1** Kneeling & Standing



Note: A document template with the signage is available in WFTF website for download.



# World Field Target Federation

## Core Rules

### 2.13 SCORE CARD

**Field Target Score Card**

Shooter ID: \_\_\_\_\_ Date: \_\_\_\_\_  
 Name: \_\_\_\_\_  
 Country: \_\_\_\_\_

Black Course    PCP Int.    Start Lane

Warnings:  2 | 3    Team:

|    |    |    |    |    |    |    |    |    |    |       |
|----|----|----|----|----|----|----|----|----|----|-------|
| 1  | 2  | 3  | 4  | 5  | 6  | 7  | 8  | 9  | 10 | Total |
|    |    |    |    |    |    |    |    |    |    |       |
| 11 | 12 | 13 | 14 | 15 | 16 | 17 | 18 | 19 | 20 | Total |
|    |    |    |    |    |    |    |    |    |    |       |
| 21 | 22 | 23 | 24 | 25 | 26 | 27 | 28 | 29 | 30 | Total |
|    |    |    |    |    |    |    |    |    |    |       |
| 31 | 32 | 33 | 34 | 35 | 36 | 37 | 38 | 39 | 40 | Total |
|    |    |    |    |    |    |    |    |    |    |       |
| 41 | 42 | 43 | 44 | 45 | 46 | 47 | 48 | 49 | 50 | Total |
|    |    |    |    |    |    |    |    |    |    |       |

0 - Miss    X - Hit

Signatures: \_\_\_\_\_

Control Sticker/Stamp/Sig: \_\_\_\_\_

Pellet Velocity: \_\_\_\_\_  
 Weight: \_\_\_\_\_

0-10 Total Hits

0-10 Sub-Total

0-10 Total Hits

0-10 Pellet velocity and weight

Note: A document template with the Score Card is available in WFTF website for download.

### 3. SAFETY

As is the case in all shooting sports, safety on the range is of the utmost importance therefore:

- 3.1.1 All shooters, RGB affiliated or otherwise, must have competed in or marshalled a domestic RGB held event, from which an understanding of range safety, timing and scorecard marking is obtained.
- 3.1.2 No rifle may at any time be pointed in the direction of people or animals.
- 3.1.3 Unless in the act of shooting all rifles must be unloaded. Rifles must face down range when loaded.
- 3.1.4 When a ceasefire is signalled (one whistle/horn) a loaded rifle must be discharged safely downrange into the ground.





# World Field Target Federation

## Core Rules

**3.1.5** When carrying a rifle it should be pointed **down**, unless in a closed case or bag. If carried in an open rifle carrier, the cocking lever/bolt shall at all times be in the open position.



**3.1.6** Non-participants are not allowed on the shooting line.

**3.1.7** No children or pets are allowed on ranges during a competition, unless accompanied by and under control of a responsible adult.

**3.1.8** No alcohol or drugs may be consumed before or during a day's competition until the last shot had been fired. This excludes prescribed medication.

## 4. ADMINISTRATION

### 4.1 ENTRIES

**4.1.1** Entries for the Worlds are normally invited shortly after conclusion of the previous year's event.

**4.1.2** A web site is usually opened by the host organisation on which a log of entries received (plus other relevant information) is shown.

**4.1.3** The number of available places in a championship is limited so the registrations process has the following priority:

- a. RGB Team members (8 PCP + 6 Springer)
- b. RGB members (Individual Shooters)
- c. Guests (Individual Shooters without a RGB filiation)

**4.1.4** Inscriptions should be made via the RGB/RGB Representative or with the approval of the RGB and according to the rules/procedures defined by each country including a RGB membership if it exists. (Rule Effective 01-10-2016 – After WFTC 2016)

**4.1.5** In case of available places, Individual inscriptions with a RGB to support or approve the registration may be accepted. Guests (Shooters without a RGB filiation) may also be accepted. (Rule Effective 01-10-2016 – After WFTC 2016)

**4.1.6** Since the World Championship is for WFTF RGBs and its members the final result of Guest shooters without a RGB filiation will not be considered. (Rule Effective 01-10-2016 – After WFTC 2016)

**4.1.7** Names of each NGB team members are to be delivered to the organizing committee by a minimum of 24 hours prior to shooting. All teams and names are to be posted for view by all shooters prior to championship commencement.

**4.1.8** The world field target championship entry fee includes the "Registration fee (with Air supply, medical services)" and "Ceremony Dinner". All the other additional services are optional.

(Rule Effective 01-10-2016 – After WFTC 2016)



# World Field Target Federation

## Core Rules

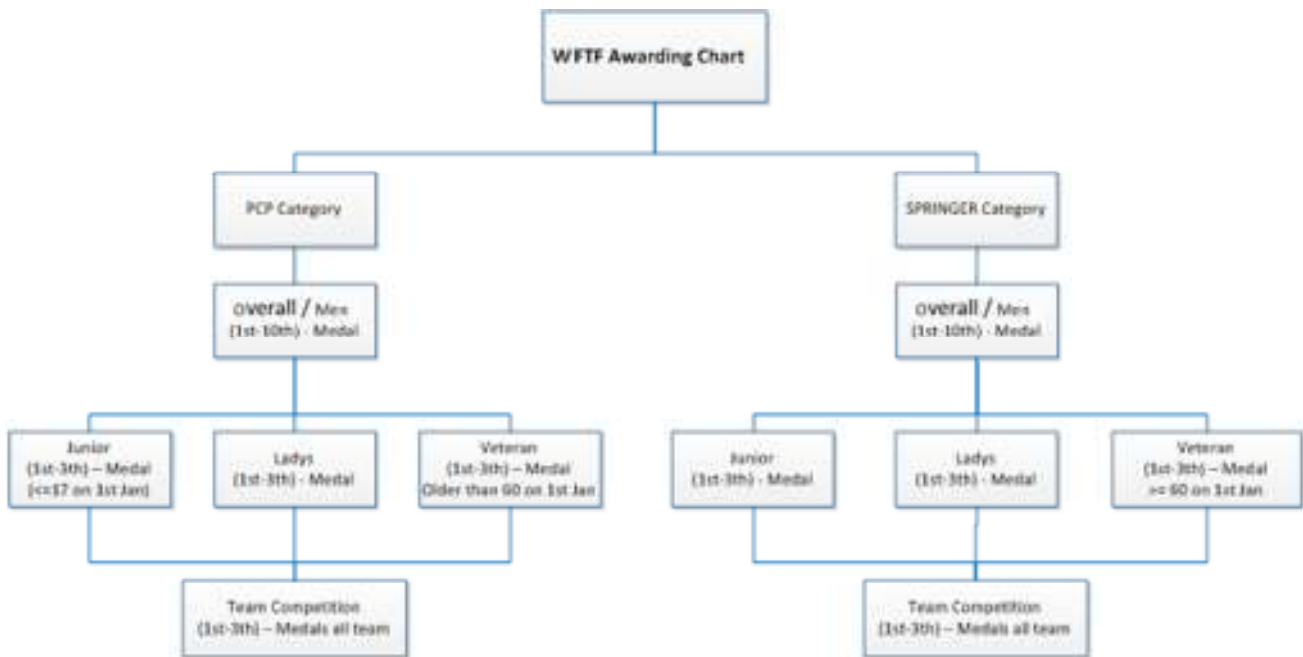
### 4.2 CATEGORIES

**4.2.1** Categories for competitions at World Championship are PCP and Springer (both limited to 12 ft. lbs or 16.3 joules).

### 4.3 CLASSES

The classes for the World Field Target Championship shooting are as follows:

- a. Junior (not yet 17 on 1st of January)
- b. Ladies
- c. Overall (MAIN competition - includes juniors, men, ladies and veterans)
- d. Veteran (60 years or older on 1st of January)



### 4.4 NATIONAL TEAMS

**4.4.1** In PCP category NATIONAL TEAMS consisting of a minimum of 4 (four) and maximum of 8 (eight) shooters can be entered.

**4.4.2** In SPRINGER category NATIONAL TEAMS consisting of a minimum of 3 (Three) and maximum of 6 (Six) shooters can be entered.

**4.4.3** A minimum of 4 (four) teams in any category is required to constitute a competition at Worlds.

**4.4.4** Team scores will be derived from the top 4, 5 or 6 scores (determined by the team entered with the smallest number of shooters) per 50 target match, added together at the end of the event.

**4.4.5** Teams at Worlds must be entered 24 hours before commencement of the first day of competition, and the organisers must post all teams on a notice board at the range.

**4.4.6** Each senior/sole RGB is entitled to enter one team only per category in the following categories (Overall Springer / Overall PCP). The “Overall PCP” can include Springer shooters in the team.



# World Field Target Federation

## Core Rules

### 4.5 GROUPING TOP SHOOTERS

Based on the WFTC's results, the following rules must be applied by the organization to select a minimum of 75 TOP Shooters and group them in the same course so they can shoot the same targets on the same day.

Rule 1 – Select WFTF podium shooters (1st, 2nd & 3rd from last 7 years);

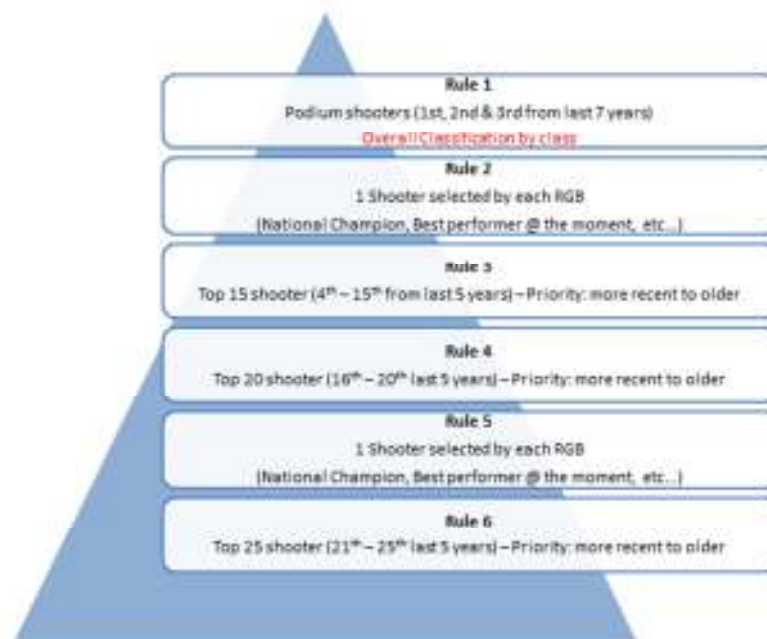
Rule 2 – Each RGB identifies 1 TOP shooter (National Champion, best performer of the moment, etc...);

Rule 3 – Select shooters between 4<sup>th</sup> to 15<sup>th</sup> of the last 5 world championship competitions;

Rule 4 – Select shooters between 16<sup>th</sup> to 20<sup>th</sup> of the last 5 world championship competitions;

Rule 5 – Each RGB identifies 1 TOP shooter (National Champion, best performer of the moment, etc...);

Rule 6 – Select shooters between 21<sup>th</sup> to 25<sup>th</sup> of the last 5 world championship competitions;



Note: The selection should be made sequentially from the most recent world championship to the oldest until all places are filled

### 4.6 SHOOTING GROUPS

**4.6.1** Shooters grouped together on a shooting lane should ideally not consist of members from the same country/area/club.

**4.6.2** In events spanning over more than one match, the shooters per lane for subsequent matches may be grouped according to accumulated score ranking.

**4.6.3** Where there are multiple ranges used, each shooter must shoot on every range once.

**4.6.4** Score cards indicating the shooters' names and starting lane, timers and pens must be available (per shooting lane) and handed to all participants before each match commences.



# World Field Target Federation

## Core Rules

---

### 4.7 MARSHALLING

**4.7.1** There must be enough Deputy Marshals to cover the complete range within view of each other, and they shall be supplied with identifying vests, effective two way communication equipment and whistles/horns.

**4.7.2** The minimum number of Marshalls in a WFTF competition (150 targets) is seven (7) Marshalls. This makes one (1) Chief Marshall and 6 (six) Deputy Marshalls (two Deputy Marshalls for each 50 target course).

**4.7.3** All Marshalls shall be well versed in shooting safety, FT rules and especially the understanding and handling of field target failures.

**4.7.4** Wherever possible, they should also be able to speak and understand English.

### 4.8 DISABLED SHOOTERS

**4.8.1** Shooters that cannot, for whatever PHYSICAL OR MEDICAL REASON, comply with a particular shooting position, shall inform the Chief Marshal 24 hour before commencement of a match, and obtain permission to use an alternative position or aid, providing that no unfair advantage is gained.

**4.8.2** All Marshalls shall be made aware of such arrangement.

**4.8.3** The allowed alternative positions are:

- a. Alternative to Kneeling Position is standing.
- b. Alternative to Standing Position is not available (each target counts as a missed target)

### 4.9 EMERGENCY SERVICES

**4.9.1** EMERGENCY SERVICES in the form of an ambulance or qualified first aid staff must be present on the range during all World Championship events.

**4.9.2** Each shooter is responsible for his/her own personal accident insurance. In addition to this the host organisation (in countries where this is permitted) shall take out event insurance at World Championship and international events.

### 4.10 RULES ACCESS

**4.10.1** A copy of these RULES shall be kept on the range during matches, and accessible to all present.

## 5. COMPETITION

### 5.1 THE COURSE

**5.1.1** A full course of fire at World Championship consists of 50 targets per day over 3 days.

**5.1.2** A full course of fire must be completed for a score to be deemed valid excepting for circumstances listed below under rule "5.11 - LEAVING THE FIRE OF LINE".

### 5.2 PRACTISE DAY

**5.2.1** AT least 1 practise day before commencement of the Worlds competition must be provided.



# World Field Target Federation

## Core Rules

### 5.3 RIFLE POWER VALIDATION (Chronograph)

**During training day** (1 day before starting the competition):

**5.3.1** It is mandatory that on the training day there is a power validation test to be done before commencement of the competition.

**5.3.2** During the **training day**, the velocity test/configuration can be made in any number of trials without penalties/warning/etc....

#### During Competition

**5.3.3** All rifles shall be chronographed daily.

**5.3.4** At first test rifles that exceed the 12 ft. lbs or 16.3 joules limit, may be adjusted for a re-test before the match starts.

**5.3.5** The Marshall shall personally load each pellet, ensuring that it is not deformed or damaged.

**5.3.6** Tests on subsequent days may be done at any point along the course as determined by the Chief Marshal.

**5.3.7** If a shooter fails a test, then the test must be repeated. A maximum of 3 readable shots may be made.

**5.3.8** Any failure at these subsequent tests will lead to disqualification from that day's result.

**5.3.9** Each time a unique sticker shall be attached to every rifle that has passed the test and the chronograph speed recorded is noted on a master sheet.

**5.3.10** The velocity test result is recorded in the score card by the Deputy Marshall in charge and a signature/control sticker/stamp included.

|                            |                                         |
|----------------------------|-----------------------------------------|
| 0 - Miss    X - Hit        |                                         |
| Signatures                 | <input type="text"/>                    |
|                            | Total Hits                              |
| Control Sticker/Stamp/Sig. | Pellet Velocity: -----<br>Weight: ----- |

### 5.4 START / COURSE Re-Open procedure

**5.4.1** A match starts/course re-opens with the sounding of two whistles/horns by the Deputy Marshals.







# World Field Target Federation

## Core Rules

**5.4.2** Any timers that had been stopped for each target left to be shooting the shooter will have one minute for preparation plus one minute per target on a lane.

### 5.5 CEASEFIRE PROCEDURE

**5.5.1** A course (or section thereof) is closed when a single whistle/horn is sounded.



**5.5.2** All timers are immediately stopped and any loaded rifles are fired into the ground in front of the shooters and across the firing line.

**5.5.3** A visual sign should be made by each squad by raising their hand. By raising their hand, the squad is giving a clear sign of permission to the Marshall to go ahead and enter in the competition area.



**5.5.4** No shooter may move towards a target (unless requested by a Deputy Marshall to do so), range-find a target, or do any other preparation until the range is re-opened.

### 5.6 TIME ALLOWED

**5.6.1** Shooters are allowed 3 minutes in each lane. 1 minute for preparation plus 2 minutes for 2 targets.

**5.6.2** Timing starts when the shooter sits down/kneels or brings the scope to his/her eye for ranging in the standing position.

**5.6.3** Looking through the scope, Range finding, loading of rifle, checking of the wind are all part of the timing process.

**5.6.4** The shooter may change the configurations of the hamster and butt hook while waiting for his turn.

### 5.7 ADDRESSING TARGETS

**5.7.1** Targets are addressed in number sequence.



# World Field Target Federation

## Core Rules

**5.7.2** If an incorrect target is shot at, the shooter scores a '0' and continues with the following target on their score card.



*Example: if a shooter on lane 1, shoots target 2 first and drops the target- the wrong one. The shooter will have a "0" on target 1 and will have to reset target 2 and shoot it again.*

**5.7.3** No extra support can be used during the range finding period (includes tree poles, lane poles, tripod, etc...)



### 5.8 SCORING & SCORE CARDS

**5.8.1** A score is indicated on the score card by an X for a knock down or a 0 if the target remains standing.

**5.8.2** Only shooters grouped together on a lane or a Deputy Marshal may handle score cards.

**5.8.3** Any changes to a score card shall be counter signed by a Deputy Marshall.

**5.8.4** As soon as a match is completed, all score cards, duly completed and signed by all of the squad the shooter and scorer, must immediately be returned to the registration officials.

### 5.9 SCORE CARD CORRECTION

**5.9.1** Any corrections made in a score card needs to be confirmed / validated by a Marshall.

**5.9.2** Any corrections made in a score card without the validation by a Marshall may lead the target being scored as a miss "0".





# World Field Target Federation Core Rules

## 5.10 DISPUTED TARGETS

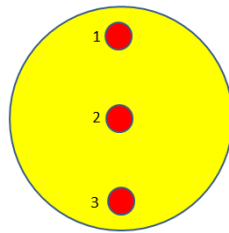
**5.10.1** Any disputed target must be challenged immediately after a shot is fired.

**5.10.2** Under no circumstances should the shooter touch the reset cord until the dispute has been resolved.

**5.10.3** Targets should be checked by the Deputy Marshal whose decision is final.

**5.10.4** Marshal procedures to validate a target dispute.

1. The first thing to do is a visual check-up.
  - a. Make sure the shooter hasn't touched the reset string.
  - b. Check that the reset string isn't stuck or in tension preventing the target to fall.
  - c. Check that the target inclination is appropriate.
  - d. Check that there isn't anything in the surroundings of the target that prevents the target to work correctly (bush, tree, branch etc.).
  - e. If the dispute is at the beginning of a session, validate splits;
2. After passing all of the visual checks, the target will be tested at least 3 times in different kill zone target areas (ex. top, middle and bottom) using the Official WFTF target checking device by a marshal trained and certified in its use.



3. If no issue is identified, the shooter will have a zero (miss).

4. If a target is found to be faulty, the target should be repaired or replaced immediately by a target with similar kill-zone size and will be re-shot by only the shooter who had challenged the shot.

5. If a target is found to be faulty and there's no replacement target, all shooters will be awarded with that point regardless of whether they have already shot the target or not, and it must remain removed for the remainder of the competition. For example, if a target is removed from the Yellow course, it stays removed from the competition for the following days and all shooters score an X for the target.

6. Number of replacement targets an organization must have as a backup (in each 50 target course):

| 15 mm | 25 mm | 40 mm |
|-------|-------|-------|
| 1     | 1     | 1     |

## 5.11 LEAVING THE LINE OF FIRE

Shooters may only leave the firing line under the following circumstances:

**5.11.1** Voluntary abandonment of the shoot, in which case the score up to that point will be accepted as a valid result;

**5.11.2** To repair equipment that has been rendered unsafe or is incapable of firing a shot by whatever means. This excludes zero-shift of optical equipment or poorly zeroed systems. The shooter may replace the offending part or equipment with the permission of the Deputy Marshal. No visit to the sighting-in range by the shooter or any person on his/her behalf is allowed;

**5.11.3** For any other occurrence deemed valid by the Deputy Marshal.



# World Field Target Federation

## Core Rules

**5.11.4** In all the above cases the shooter's score card must be handed to the Deputy Marshal and the latter's permission obtained to leave the firing line, with a stipulated time of 5 minutes for return. The time of departure and intended return will be recorded on the score card and any card not claimed within the designated return time will be submitted as final score for that match.

### 5.12 FINAL RESULTS

**5.12.1** The final results of the championship will be determined by the sum of the total hits obtained by each shooter on each competition day, minus the awarded penalty points.

**5.12.2** The warnings will be used to order the classifications.

| General Classification | Shooter Name | Number Hits | Warnings |
|------------------------|--------------|-------------|----------|
| 1 <sup>st</sup>        | Shooter a    | 120         | 0        |
| 2 <sup>nd</sup>        | Shooter b    | 120         | 1        |
| 3 <sup>rd</sup>        | Shooter c    | 120         | 2        |

**5.12.3** The top 10 places in each class (Overall) cannot have tied scores.

### 5.13 TIED SCORES

**5.13.1** In the event of tied scores for award winning positions, final placements shall be decided by a shoot-off.

**5.13.2** For each tied score (per category) similar lanes containing 2 target within positional shooting parameters (standing/kneeling) is prepared for each shooter, and shooters with tied scores will shoot off simultaneously as follows:

- 1 round by each tied shooter from the sitting/free position;
- If undecided, 1 round by each remaining shooter from the kneeling position;
- If still undecided, 1 round by each shooter from the standing position;
- If still undecided, shooters continue shooting rounds from the standing position until all awards placements have been determined.

**5.13.3** The time defined for each round in a tied score is 3 minutes (1 minute preparation plus 1 minute per target).



**5.13.4** The result, for each shooter in each round is obtained summing the total of hits 'X' in 2 targets.

### 5.14 LATE ARRIVALS - Shooters

**5.14.1** It is the responsibility of the shooter to arrive on time to the competition and according to the organization schedule.

**5.14.2** Any shooter that does not follow these requirements (including arriving on time to the shooting lane before the competition starts) will not be able to shoot on each day in the World Championship.



# World Field Target Federation

## Core Rules

**5.14.3** The Chief Marshall may allow the shooter to enter in competition in very special justified cases and as long it doesn't delay the competition.

### 5.15 UNSAFE PRACTICE /CHEATING

**5.15.1** Unacceptable firing line conduct will not be tolerated. Coaching or barracking of a shooter in competition is prohibited. Rifles will NOT be shared on the firing line.

**5.15.2** The penalty for an unsafe practice or any form of cheating is disqualification, with the organisers reserving the right to take further action.

### 5.16 PROCEDURES TO PROTEST

**5.16.1** Any protest must be made to the chief Marshall until the end of each competition day (max. 30 minutes after the end of the competition).

**5.16.2** Any protest not made in the same day of the competition will not be considered.

**5.16.3** The protest will be analysed /decided and the answer will be given on the same day.

**5.16.4** The Chief-Marshall decision will be final.

**5.16.5** The written protest shall be made using the template which is available on the WFTF website and on the reception desk.

### 5.17 SMOKING

**5.17.1** Shooters are not allowed to smoke during the World Field Target Championship (As soon the Marshall blows the whistle until the end of the competition). Electronic cigarettes and vaporizers included.



## 6. WFTF RECOGNITIONS

### 6.1 PRIZES FOR WINNERS

**6.1.1** During a World Field target Championship Medals will be distributed to the winners and according with classes described in the WFTF Constitution Rules.

### 6.2 FIELD TARGET MASTER TITLE

**6.2.1** A public recognition will be made by WFTF to all shooters who achieve a score greater than 92,5% of the highest score in their category (PCP / Spring Piston).

**6.2.2** The recognition will be made during the World Field Target Championship Ceremony.

**6.2.3** The recognition will be given only one time per shooter and per class.



# World Field Target Federation

## Core Rules

---

### 6.3 SERVICE TO THE SPORT AWARD

- 6.3.1 A public recognition may be given to someone who has contributed greatly to improve Field Target sport.
- 6.3.2 Each RGB will nominate a person to be voted.
- 6.3.3 The voting will end once a person has been selected by more than 50% of the RGB's total votes.
- 6.3.4 The recognition will be made during the World Field Target Championship Ceremony.
- 6.3.5 The nomination cannot be made to the WFTF President.

## 7. DISCIPLINARY MATTERS

### 7.1 TYPES OF MEASURES

The available disciplinary measures in WFTF are:

#### 7.1.1 VERBAL WARNING

A verbal warning is a polite voice instruction with the objective of informing or alerting a shooter about something, making sure the shooter is adhering to the WFTF rules. The warning should be instructive, clear and help everyone to understand what is wrong or not. A verbal warning can be made by a Marshall or Squad team shooters.

#### 7.1.2 WARNING

A warning penalty during a competition is more serious since it will be register on the shooter's score card.

#### 7.1.3 PENALTY

- a. The point penalties represent an action of attributing negative points to a shooter.
- b. The negative points will be used to reduce the shooter's final score.
- c. A decision of attributing a Penalty directly without passing the Warning phase is a decision of the pre-selected multi-national jury.
- d. Only a multi-national jury is able to attribute negative points and for the cases not defined they can be one (1) or two (2) points.

#### 7.1.4 DISQUALIFICATION

- a. The disqualification is the highest penalty level in the WFTF and represents the act of stopping a shooter from continuing in the competition immediately.
- b. Only the Multi-Nationality Jury is entitled to disqualify a shooter except if the reason is related with any matter under the defined rules "7.4.3.-Disqualification".  
In this case the Chief Marshall may disqualify a shooter immediately.

### 7.2 MULTI-NATIONAL JURY

- 7.2.1 A multi-national jury of five (5) members will be constituted for each world championship.
- 7.2.2 The multi-national jury will include the Chief-Marshall of the competition and four (4) people proposed by the marshalling committee.
- 7.2.3 The multi-national jury proposed by the Marshalling Committee need the approval of the WFTF President.



# World Field Target Federation

## Core Rules

**7.2.4** The powers of the Multi-National Jury are to decide about Penalties and to decide on areas not defined in the rules.


**Note:** It is not possible to have every single possibility written down so the Multi-National jury panel should have power to decide on grey areas.

### 7.3 WARNINGS TREATMENT

**7.3.1** During the three (3) days of competition a list of all warnings will be collected every day.

**7.3.2** As soon as a shooter gets three (3) warnings a pre-selected multi-national jury of five (5) members will analyse the gravity of the warnings and will decide whether any penalty points are to be awarded to the shooter.

**Field Target Score Card**



Shooter ID: \_\_\_\_\_ Date: \_\_\_\_\_  
Name: \_\_\_\_\_  
Country: \_\_\_\_\_

|                                                   |          |                                                           |   |                                                     |
|---------------------------------------------------|----------|-----------------------------------------------------------|---|-----------------------------------------------------|
| Black Course                                      | PCP Int. | Start Lane <span style="font-size: 1.2em;">▶</span> _____ |   |                                                     |
| Warnings <span style="font-size: 1.2em;">▶</span> | 1        | 2                                                         | 3 | Team <span style="font-size: 1.2em;">▶</span> _____ |



# World Field Target Federation

## Core Rules

### 7.4 DEFINED PENALTIES

This section defines the known cases and the penalties associated. All cases not described in this section will be decided on the moment by the Chief Marshall or Pre-Selected Multi-Nationality Marshall team.

#### 7.4.1 Warnings

|          |                                                                                                                                             |
|----------|---------------------------------------------------------------------------------------------------------------------------------------------|
| WARNINGS | a. Not adhering to a Marshal instruction                                                                                                    |
|          | b. Not timing a shooter (all team will have 1 warning)                                                                                      |
|          | c. Entering in the shooting area while competition is stopped                                                                               |
|          | d. When shooting the muzzle must be in front of the line and the trigger must remain behind it                                              |
|          | e. Not having permission to leave the competition area during a shoot (toilets near the course are considered part of the competition area) |
|          |                                                                                                                                             |
|          |                                                                                                                                             |

#### 7.4.2 Point Penalty

|                                    |                                                                                                      |
|------------------------------------|------------------------------------------------------------------------------------------------------|
| POINT PENALTY<br>(-1 or -2 points) | a. Firing a shot into the ground without requesting permission of the shooting partner (Target miss) |
|                                    | b. Rifle Accessory not allowed                                                                       |
|                                    | c. Range finding with artificial or natural support                                                  |
|                                    | d. Seat height above limit                                                                           |
|                                    |                                                                                                      |

#### 7.4.3 Disqualification

|                  |                                                                                                                                                   |
|------------------|---------------------------------------------------------------------------------------------------------------------------------------------------|
| DISQUALIFICATION | a. For every shooter that doesn't follow the safety procedures potentially putting other people at risk will be disqualified from the competition |
|                  | b. Cheating, Inappropriate behaviour, not being on time, use of drug(s), alcohol                                                                  |
|                  | c. Pellet velocity above limit (disqualification on that day's result)                                                                            |
|                  | d. Not Chronographing the air rifle when requested                                                                                                |

**Important (under rule 7.4.3):** Depending on the seriousness of the offence it may be appropriate to give a warning initially before disqualification, but all breaches in safety rules should be taken very seriously.



### 8. DEFINITIONS

**8.1. HAMSTER** – A support that is affixed to the underside of the rifle stock and rests on the shooter’s hand or knee, depending on the shooting position. The bottom surface of hamster can be in any shape or form.

**8.2. PCP** – pre-charged pneumatic air rifle.

**8.3. RGB** – Representative Governing Body, the organisation that represents a member country at the WFTF.

**8.4. SINGLE RIFLE SLING** – a sling used to carry the rifle or as a means of steadying the aim. Such a sling shall be attached to the rifle at a minimum of one and maximum of two points when a shot is taken. The sling may be unclipped from the rifle when not in use.

**8.5. SPRINGER** – air rifle in which power is generated by a large spring/gas ram and piston.

### 8.6. KNEELING

a. A shooting position where there shall be only 3 points of contact with the ground (2 feet and 1 knee).



b. A kneeling roll may be used to support the rear foot and/or ankle only.



c. The Rear Foot, when viewed from the rear should be vertical in appearance. No other part of the body may enter in contact with the kneeling roll.





# World Field Target Federation

## Core Rules

- d. The Rear Foot is allowed to be angled so the ankle joint can be closer or further from the ground as desired. The toes can be bent or flat.



- e. If a kneeling roll is not present underneath the ankle joint, the ankle joint must not be in contact with the ground or appear to be in contact with the ground.



- f. The rear foot must be visible to the marshal at all times.

- g. The leading hand will support the rifle and from the wrist forward be unsupported by the knee.





# World Field Target Federation

## Core Rules

- h. The wrist cannot be in any way restricted of free movement.



- i. No part of the rifle/hamster shall be in contact with the leading forearm (behind the wrist) or appear to be in contact with the leading forearm.



- j. one rifle sling and/or butt hook may be used to steady the aim.

### 8.7. STANDING

- A shooting position where the shot is taken in a standing position without the aid of any support;
- There shall be only 2 points of contact (2 feet with the ground);
- The lead hand needs to support the rifle using the rifle fore-end or hamster;
- A single rifle sling and/or butt hook may be used to steady the aim.

**8.8. FREE POSITION** - The shooter may use any shooting position that is safe and comfortable to the shooter. No other means of support, other than the shooter, shall be used for the rifle or body. The rifle cannot contact the ground. No body straps are allowed.

**8.9. PRONE** – (which may be used in the “Free” position) The Shooter lays face down. The shooter’s forearm, from elbow to fingertips must be clear of any artificial or natural support. However, a sling as described in rule may be in contact with the shooter’s forearm in order to help steady their arm.

**8.10. WORLDS** – the annual World Field Target Championships hosted by a member RGB under the auspices of the WFTF.

**8.11. WIND INDICATOR** - (Methods of wind indication) – Must be Non electronic and only attached to rifle. Any other form of shooter initiated wind assessment is NOT permitted. (Includes, but not restricted to powders, grass, smoke, dust etc...)



# World Field Target Federation

## Core Rules

---

**8.12. DEFINITION OF A 'SHOT'** - A shot is deemed to have been fired if air is discharged from a rifle. A shooter may however fire a shot into the ground after declaring this to his/her lane partners.

**8.13. COACHING** – The act of providing information about wind, target distances.



# World Field Target Federation

## Core Rules

### 9. ANNEXURE – A (Pellet Speed Table)

Table with the maximum Pellet Velocity allowed based on the pellet weight:

| Weight (grains) | Weight (grams) | FPS   | MPS   |
|-----------------|----------------|-------|-------|
| 7,6             | 0,492          | 843,0 | 256,9 |
| 7,7             | 0,499          | 838,0 | 255,7 |
| 7,8             | 0,505          | 832,0 | 253,6 |
| 7,9             | 0,512          | 827,0 | 252,1 |
| 8,0             | 0,518          | 822,0 | 250,5 |
| 8,1             | 0,525          | 817,0 | 249,0 |
| 8,2             | 0,531          | 812,0 | 247,5 |
| 8,3             | 0,538          | 807,0 | 246,0 |
| 8,4             | 0,544          | 802,0 | 244,4 |
| 8,5             | 0,551          | 797,0 | 242,9 |
| 8,6             | 0,557          | 793,0 | 241,7 |
| 8,7             | 0,564          | 788,0 | 240,2 |
| 8,8             | 0,570          | 784,0 | 239,0 |
| 8,9             | 0,577          | 779,0 | 237,4 |
| 9,0             | 0,583          | 775,0 | 236,2 |
| 9,1             | 0,590          | 771,0 | 235,0 |
| 9,2             | 0,596          | 767,0 | 233,8 |
| 9,3             | 0,603          | 762,0 | 232,3 |
| 9,4             | 0,609          | 758,0 | 231,0 |
| 9,5             | 0,616          | 754,0 | 229,8 |
| 9,6             | 0,622          | 750,0 | 228,6 |
| 9,7             | 0,629          | 746,0 | 227,4 |
| 9,8             | 0,635          | 743,0 | 226,5 |
| 9,9             | 0,642          | 739,0 | 225,2 |
| 10,0            | 0,648          | 735,0 | 224,0 |
| 10,1            | 0,654          | 732,0 | 223,1 |
| 10,2            | 0,661          | 728,0 | 221,9 |
| 10,3            | 0,667          | 724,0 | 220,7 |
| 10,4            | 0,674          | 721,0 | 219,8 |
| 10,5            | 0,680          | 717,0 | 218,5 |
| 10,6            | 0,687          | 714,0 | 217,6 |
| 10,7            | 0,693          | 711,0 | 216,7 |
| 10,8            | 0,700          | 707,0 | 215,5 |

| Weight (grains) | Weight (grams) | FPS   | MPS   |
|-----------------|----------------|-------|-------|
| 10,9            | 0,706          | 704,0 | 214,6 |
| 11,0            | 0,713          | 701,0 | 213,7 |
| 11,1            | 0,719          | 698,0 | 212,8 |
| 11,2            | 0,726          | 695,0 | 211,8 |
| 11,3            | 0,732          | 692,0 | 210,9 |
| 11,4            | 0,739          | 689,0 | 210,0 |
| 11,5            | 0,745          | 686,0 | 209,1 |
| 11,6            | 0,752          | 683,0 | 208,2 |
| 11,7            | 0,758          | 680,0 | 207,3 |
| 11,8            | 0,765          | 677,0 | 206,3 |
| 11,9            | 0,771          | 674,0 | 205,4 |
| 12,0            | 0,778          | 671,0 | 204,5 |
| 12,1            | 0,784          | 668,0 | 203,6 |
| 12,2            | 0,791          | 666,0 | 203,0 |
| 12,3            | 0,797          | 663,0 | 202,1 |
| 12,4            | 0,804          | 660,0 | 201,2 |
| 12,5            | 0,810          | 658,0 | 200,6 |
| 12,6            | 0,816          | 655,0 | 199,6 |
| 12,7            | 0,823          | 652,0 | 198,7 |
| 12,8            | 0,829          | 650,0 | 198,1 |
| 12,9            | 0,836          | 647,0 | 197,2 |
| 13,0            | 0,842          | 645,0 | 196,6 |
| 13,1            | 0,849          | 642,0 | 195,7 |
| 13,2            | 0,855          | 640,0 | 195,1 |
| 13,3            | 0,862          | 638,0 | 194,5 |
| 13,4            | 0,868          | 635,0 | 193,5 |
| 13,5            | 0,875          | 633,0 | 192,9 |
| 13,6            | 0,881          | 630,0 | 192,0 |
| 13,7            | 0,888          | 628,0 | 191,4 |
| 13,8            | 0,894          | 626,0 | 190,8 |
| 13,9            | 0,901          | 624,0 | 190,2 |
| 14,0            | 0,907          | 621,0 | 189,3 |

**Important:** For pellets with a weight in grams between two (2) values in the table, for example 0,547 grams, use the lighter value of the table pellet weight to determine the maximum allowed velocity. In this example (0,547) use the velocity of the weight 0,544 grams – 802,0 fps or 244,4mps.



# World Field Target Federation

## Core Rules

### 10. DOCUMENT CONTROL

#### Revision history

| Version | Approval date | Change description                                                                                                               | General Assembly Resolution |
|---------|---------------|----------------------------------------------------------------------------------------------------------------------------------|-----------------------------|
| V1.0    | 2015.10.12    | Standard Size and Colour for Targeting Numbering                                                                                 | R02/Proposal 1/2015         |
|         |               | Standard Signage for Positional Targets                                                                                          | R02/Proposal 2/2015         |
|         |               | Standard WFTF Official Score Card                                                                                                | R02/Proposal 3/2015         |
|         |               | Definition of the allowed Target colours combinations – Option 2                                                                 | R02/Proposal 4/2015         |
|         |               | Selecting world top Shooters and Group them in a competition (same course)                                                       | R02/Proposal 5/2015         |
|         |               | Painted Targets (to be mandatory to paint targets before starting each competition)                                              | R02/Proposal 6/2015         |
|         |               | Definition if Extra support during range finding is allowed (e.g. lane poles)                                                    | R02/Proposal 7/2015         |
|         |               | Cease Fire procedures (re-start a competition) - Clarification of the rule                                                       | R02/Proposal 8/2015         |
|         |               | National Teams - Allow a team to compete in PCP OPEN class having PCP & Springer shooters                                        | R02/Proposal 9/2015         |
|         |               | Kneeling Rule                                                                                                                    | R02/Proposal 10/2015        |
| V1.1    | 2015.10.16    | Improvement on the Kneeling definition                                                                                           | R04/Proposal 11/2015        |
|         |               | Procedures to Present a Protest                                                                                                  | R04/Proposal 12/2015        |
|         |               | Bipods and Stock Weights - Add new accessories                                                                                   | R04/Proposal 13/2015        |
|         |               | Tied scores – Change procedures to have shooters, shooting at the same time – Option 2                                           | R04/Proposal 14/2015        |
|         |               | Late arrivals - shooters                                                                                                         | R04/Proposal 15/2015        |
|         |               | No Smoking during competition                                                                                                    | R04/Proposal 16/2015        |
|         |               | Official Sponsor Logo                                                                                                            | R04/Proposal 17/2015        |
| V1.2    | 2015.11.01    | Change Shoot-Offs procedures (2 targets, 3 minutes)                                                                              | R07/Proposal 19/2015        |
| V1.3    | 2015.12.08    | 1.1.3. - Remove high Power from rules                                                                                            | R08/Proposal 20/2015        |
|         |               | 2.1.4. - Remove non-worlds rules from Core Rules                                                                                 | R08/Proposal 21/2015        |
|         |               | 2.4.4. - Target Distance (from lane pole)                                                                                        | R08/Proposal 22/2015        |
|         |               | 2.4.5. - Request to Validate a target distance from RGB                                                                          | R08/Proposal 23/2015        |
|         |               | 2.4.6. - As soon championship starts target distances are considered ok.                                                         | R08/Proposal 24/2015        |
|         |               | 2.5.2. - total number of targets designated as standing or kneeling may not exceed 20% (include number of targets as an example) | R08/Proposal 25/2015        |
|         |               | 2.6.1 The total number of targets with reduced diameter hit zones may not exceed 25% (include number of targets as an example)   | R08/Proposal 26/2015        |
|         |               | 2.7.4 - Target papers rules in zeroing (distances between papers)                                                                | R08/Proposal 27/2015        |
|         |               | 2.7.8. - number of training hours in a competition day                                                                           | R08/Proposal 28/2015        |



# World Field Target Federation

## Core Rules

| Version | Approval date | Change description                                                                                                  | General Assembly Resolution |
|---------|---------------|---------------------------------------------------------------------------------------------------------------------|-----------------------------|
|         |               | 2.8.2. - minimum distance between lane poles                                                                        | R08/Proposal 29/2015        |
|         |               | 4.2.2. - Remove high Power from rules                                                                               | R08/Proposal 30/2015        |
|         |               | 4.7.2. - Minimum number of Marshalls in a World Competition                                                         | R08/Proposal 31/2015        |
|         |               | 4.8.3a - alternative shooting position (Free Position)                                                              | R08/Proposal 32/2015        |
|         |               | 4.8.3b - alternative shooting position (kneeling)                                                                   | R08/Proposal 33/2015        |
|         |               | 4.8.3c - alternative shooting position (Standing)                                                                   | R08/Proposal 34/2015        |
|         |               | 5.3.6. - Pellet speed test made 3 times                                                                             | R08/Proposal 35/2015        |
|         |               | 5.3.9. - velocity test result is recorded in the score card                                                         | R08/Proposal 36/2015        |
|         |               | 5.5.3. - Marshall entering in the competition area - visual sign should be made by each squad by raising their hand | R08/Proposal 37/2015        |
|         |               | 5.9.1 - score card corrections need to be confirmed / validated by a Marshall                                       | R08/Proposal 38/2015        |
|         |               | 5.9.2 - corrections made in a score without the validation by a Marshall may lead to remove score card              | R08/Proposal 39/2015        |
|         |               | 5.10.5.1. - Marshal procedures to validate a target dispute (target checker)                                        | R08/Proposal 40/2015        |
|         |               | 5.10.5.2. - Marshal procedures to validate a target dispute (target checker)                                        | R08/Proposal 41/2015        |
|         |               | 5.10.5.3. - Marshal procedures to validate a target dispute (target checker)                                        | R08/Proposal 42/2015        |
|         |               | 5.10.5.4. - Marshal procedures to validate a target dispute (target checker)                                        | R08/Proposal 43/2015        |
|         |               | 5.10.5.5. - Marshal procedures to validate a target dispute (target checker)                                        | R08/Proposal 44/2015        |
|         |               | 6.1.1 - Prizes for Winners (medals)                                                                                 | R08/Proposal 45/2015        |
|         |               | 6.2.1 - Field target Master title                                                                                   | R08/Proposal 46/2015        |
|         |               | 6.2.2 - Field target Master title                                                                                   | R08/Proposal 47/2015        |
|         |               | 6.2.3 - Field target Master title                                                                                   | R08/Proposal 48/2015        |
|         |               | 6.3.1 - Service to the Sport Award                                                                                  | R08/Proposal 49/2015        |
|         |               | 6.3.2 - Service to the Sport Award                                                                                  | R08/Proposal 50/2015        |
|         |               | 6.3.3 - Service to the Sport Award                                                                                  | R08/Proposal 51/2015        |
| V1.3    | 2015.12.08    | 6.3.4 - Service to the Sport Award                                                                                  | R08/Proposal 52/2015        |
| V1.3    | 2015.12.08    | 6.3.5 - Service to the Sport Award                                                                                  | R08/Proposal 53/2015        |
|         |               | 7.1.1 - Verbal Warning                                                                                              | R08/Proposal 54/2015        |
|         |               | 7.1.2 - Warning - Definition                                                                                        | R08/Proposal 55/2015        |
|         |               | 7.1.3.a - Penalty - Definition                                                                                      | R08/Proposal 56/2015        |
|         |               | 7.1.3.b - Penalty - Definition                                                                                      | R08/Proposal 57/2015        |
|         |               | 7.1.3.c - Penalty - Definition                                                                                      | R08/Proposal 58/2015        |



# World Field Target Federation

## Core Rules

| Version | Approval date | Change description                                                                                                                                                  | General Assembly Resolution |
|---------|---------------|---------------------------------------------------------------------------------------------------------------------------------------------------------------------|-----------------------------|
|         |               | 7.1.3.d - Penalty - Definition                                                                                                                                      | R08/Proposal 59/2015        |
|         |               | 7.1.4.a - Disqualification - Definition                                                                                                                             | R08/Proposal 60/2015        |
|         |               | 7.1.4.b - Disqualification - Definition                                                                                                                             | R08/Proposal 61/2015        |
|         |               | 7.2.1 - Warnings treatment - Definition                                                                                                                             | R08/Proposal 62/2015        |
|         |               | 7.2.2 - Warnings treatment - Definition                                                                                                                             | R08/Proposal 63/2015        |
|         |               | 7.3 - Penalties                                                                                                                                                     | R08/Proposal 64/2015        |
|         |               | 7.3.1.a - Warnings - Not adhering to a Marshal instruction                                                                                                          | R08/Proposal 65/2015        |
|         |               | 7.3.1.b - Warnings - Not timing a shooter (all team will have 1 warning)                                                                                            | R08/Proposal 66/2015        |
|         |               | 7.3.1.c - Warnings - Entering in the shooting area while competition is stopped;                                                                                    | R08/Proposal 67/2015        |
|         |               | 7.3.1.d - Warnings -When shooting the muzzle must be in front of the line and the trigger must remain behind it                                                     | R08/Proposal 68/2015        |
|         |               | 7.3.1.e - Warnings - Not having permission to leave the Firing Line during a shoot;                                                                                 | R08/Proposal 69/2015        |
|         |               | 7.3.2.b - Point Penalty - Firing a shoot to the ground without requesting permission to the team (Target miss);                                                     | R08/Proposal 71/2015        |
|         |               | 7.3.2.c - Point Penalty - Rifle Accessory not allowed;                                                                                                              | R08/Proposal 72/2015        |
|         |               | 7.3.2.d - Point Penalty - Range finding with artificial or natural support;                                                                                         | R08/Proposal 73/2015        |
|         |               | 7.3.2.e - Point Penalty - Seat height above limit;                                                                                                                  | R08/Proposal 74/2015        |
|         |               | 7.3.3 - Disqualification                                                                                                                                            | R08/Proposal 75/2015        |
|         |               | 7.3.3.a - Disqualification-For every shooter that doesn't follow the safety procedures, potentially putting other people will be disqualified from the competition. | R08/Proposal 76/2015        |
|         |               | 7.3.3.b - Disqualification - Cheating, Inappropriate behaviour, not being on time, use of drug(s), alcohol                                                          | R08/Proposal 77/2015        |
|         |               | 7.3.3.c - Disqualification - Pellet velocity above limit                                                                                                            | R08/Proposal 78/2015        |
|         |               | 8.13 – Coaching definition                                                                                                                                          | R08/Proposal 79/2015        |
| V1.3    | 2015.12.08    | 9 - Pellet Velocity                                                                                                                                                 | R08/Proposal 80/2015        |
| V2.0    | 2016.01.28    | 1.3 Remove laser word                                                                                                                                               | R01/ Proposal 81 / 2016     |
|         |               | 1.4.a Replace wording "one rifle sling"                                                                                                                             | R01/ Proposal 82 / 2016     |
|         |               | 1.4.j add butt-stock weights                                                                                                                                        | R01/ Proposal 83 / 2016     |
|         |               | 1.5.2 improve wording "during competition"                                                                                                                          | R01/ Proposal 84 / 2016     |
|         |               | 1.8.2 kneeling role dimensions                                                                                                                                      | R01/ Proposal 85 / 2016     |
|         |               | 2.2.1 course 150 targets, 3 days ( text extracted from old core rules)                                                                                              | R01/ Proposal 86 / 2016     |
|         |               | 2.2.2 2 targets ( text extracted from old core rules)                                                                                                               | R01/ Proposal 87 / 2016     |
|         |               | 2.2.4 targets 100% visible                                                                                                                                          | R01/ Proposal 89 / 2016     |
|         |               | 2.2.5 Target obstruction                                                                                                                                            | R01/ Proposal 90 / 2016     |
|         |               | 2.2.6 lane firing area                                                                                                                                              | R01/ Proposal 91 / 2016     |
|         |               | 2.3.1 targets addressed sequentially ( text extracted from old core rules)                                                                                          | R01/ Proposal 92 / 2016     |
|         |               | 2.3.2 2 targets = 3 mins ( text extracted from old core rules)                                                                                                      | R01/ Proposal 93 / 2016     |
|         |               | 2.3.3 leaving the area tidy ( text extracted from old core rules)                                                                                                   | R01/ Proposal 94 / 2016     |
|         |               | 2.4.1 target definition                                                                                                                                             | R01/ Proposal 95 / 2016     |





# World Field Target Federation

## Core Rules

| Version | Approval date | Change description                                                             | General Assembly Resolution |
|---------|---------------|--------------------------------------------------------------------------------|-----------------------------|
| V2.0    | 2016.01.28    | 2.6.1 pass targets between 9 and 50 metres                                     | R01/ Proposal 96 / 2016     |
|         |               | 2.6.4 improvement on the measuring rule (straight line)                        | R01/ Proposal 97 / 2016     |
|         |               | 2.6.5 improvement of the rule validation of the circuit                        | R01/ Proposal 98 / 2016     |
|         |               | 2.6.6 rule about targets outside the valid distances                           | R01/ Proposal 99 / 2016     |
|         |               | 2.6.7.a rule about targets outside the valid distances                         | R01/ Proposal 100 / 2016    |
|         |               | 2.6.7.b rule about targets outside the valid distances                         | R01/ Proposal 101 / 2016    |
|         |               | 2.8.5 improvement of the rule -positional signs between lane poles.            | R01/ Proposal 103 / 2016    |
|         |               | 2.9.4 improvement of the rule about training papers.                           | R01/ Proposal 104 / 2016    |
|         |               | 2.9.5 replacement of the papers                                                | R01/ Proposal 105 / 2016    |
|         |               | 2.9.10 amount of time for practice on each competition day                     | R01/ Proposal 106 / 2016    |
|         |               | 2.10.2 Level lanes                                                             | R01/ Proposal 107 / 2016    |
|         |               | 2.10.3 pole lanes and not trees, etc...                                        | R01/ Proposal 108 / 2016    |
|         |               | 2.10.4 increase space for shooting (1 m)                                       | R01/ Proposal 109 / 2016    |
|         |               | 2.10.5 distance between 2 Shooting lanes                                       | R01/ Proposal 110 / 2016    |
|         |               | 3.1.1 shooters need to know the basic safety rules                             | R01/ Proposal 111 / 2016    |
|         |               | 4.1.3 Priority in the inscriptions                                             | R01/ Proposal 112 / 2016    |
|         |               | 4.1.4 Inscriptions rules                                                       | R01/ Proposal 113 / 2016    |
|         |               | 4.1.5 Inscriptions rules                                                       | R01/ Proposal 114 / 2016    |
|         |               | 4.1.6 Inscriptions Guest rules                                                 | R01/ Proposal 115 / 2016    |
|         |               | 4.1.7 team members (extracted from old core rules)                             | R01/ Proposal 116 / 2016    |
|         |               | 4.1.8 registration fee + ceremony dinner rule                                  | R01/ Proposal 117 / 2016    |
|         |               | 4.3.c Overall class                                                            | R01/ Proposal 118 / 2016    |
|         |               | 4.4.6 Overall class                                                            | R01/ Proposal 119 / 2016    |
|         |               | 4.7.2 Increase the minimum number of Marshalls                                 | R01/ Proposal 120 / 2016    |
|         |               | 4.8.1 improve rule adding time                                                 | R01/ Proposal 121 / 2016    |
|         |               | 4.8.3 proposal to remove the rule (alternative shooting position)              | R01/ Proposal 122 / 2016    |
|         |               | 5.3.1 add a validation of the rifle on the training day                        | R01/ Proposal 123 / 2016    |
|         |               | 5.3.2 add a validation of the rifle on the training day                        | R01/ Proposal 124 / 2016    |
|         |               | 5.3.7 3 readable shoots                                                        | R01/ Proposal 125 / 2016    |
|         |               | 5.3.8 add from day's results                                                   | R01/ Proposal 126 / 2016    |
|         |               | 5.6.3 improve definition of the procedures during time                         | R01/ Proposal 127 / 2016    |
|         |               | 5.6.4 The shooter may change the configurations outside the timing period      | R01/ Proposal 128 / 2016    |
|         |               | 5.7.2 add example                                                              | R01/ Proposal 129 / 2016    |
|         |               | 5.9.2 Corrections to score card without marshall approval may lead to 0 result | R01/ Proposal 130 / 2016    |
|         |               | 5.10.5.2 check 3 times the target                                              | R01/ Proposal 131 / 2016    |
|         |               | 5.10.5.6 number of replacement targets                                         | R01/ Proposal 132 / 2016    |



# World Field Target Federation

## Core Rules

| Version | Approval date | Change description                                                           | General Assembly Resolution |
|---------|---------------|------------------------------------------------------------------------------|-----------------------------|
| V2.0    | 2016.01.28    | 5.11.4 include time to return                                                | R01/ Proposal 133 / 2016    |
|         |               | 5.12.1 Final results rule                                                    | R01/ Proposal 134 / 2016    |
|         |               | 5.12.2 Final results rule (use warnings to determine general classification) | R01/ Proposal 135 / 2016    |
|         |               | 5.12.3 Final results rule                                                    | R01/ Proposal 136 / 2016    |
|         |               | 5.13.4 calculation of the result during tied scores                          | R01/ Proposal 137 / 2016    |
|         |               | 5.16.5 Protests - improve rule                                               | R01/ Proposal 138 / 2016    |
|         |               | 6.2.1 reduce the percentage to include more shooters                         | R01/ Proposal 139 / 2016    |
|         |               | 6.2.3 improve rule about master title recognition                            | R01/ Proposal 140 / 2016    |
|         |               | 7.1.1 improve rule about who can give a verbal warning                       | R01/ Proposal 141 / 2016    |
|         |               | 7.1.4 Disqualification - improve rule                                        | R01/ Proposal 142 / 2016    |
|         |               | 7.2.1 Multi-National Jury definition                                         | R01/ Proposal 143 / 2016    |
|         |               | 7.2.2 Multi-National Jury definition                                         | R01/ Proposal 144 / 2016    |
|         |               | 7.2.3 Multi-National Jury definition                                         | R01/ Proposal 145 / 2016    |
|         |               | 7.2.4 Multi-National Jury definition                                         | R01/ Proposal 146 / 2016    |
|         |               | 7.4.1.e improve rule about toilets                                           | R01/ Proposal 147 / 2016    |
|         |               | 7.4.3.f Improve rule about disqualification                                  | R01/ Proposal 148 / 2016    |
|         |               | 7.4.3.g Improve rule about disqualification                                  | R01/ Proposal 149 / 2016    |
|         |               | 8.6.b Improve rule about the kneeling position                               | R01/ Proposal 150 / 2016    |
|         |               | 8.6.j Improve rule about the kneeling position                               | R01/ Proposal 151 / 2016    |
|         |               | 8.7 Improve standing position definition                                     | R01/ Proposal 152 / 2016    |
|         |               | 8.8 Improve free position definition                                         | R01/ Proposal 153 / 2016    |
|         |               | 9 Improve rule about pellet velocity                                         | R01/ Proposal 154 / 2016    |